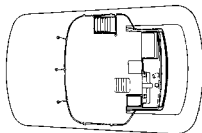
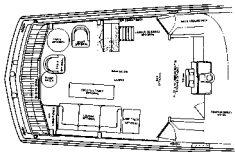
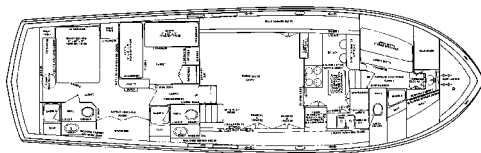


Chris Craft 55 Commander Flush Deck

1970-77



When the 55 Flush Deck was introduced in 1970, she was the largest fiberglass yacht in the Chris Craft fleet. Like many of the larger motor yachts of her era, the 55 was designed to be operated as a crewed vessel. She was built using a unique three-piece hull—the bottom is one mold and the hullsides are two separate pieces. A molded spray rail runs around the hull where the bottom and sides are joined, and a long keel below adds directional stability. The first of the Chris 55 Flush decks were hardtop models with a covered afterdeck and semi-enclosed helm. In 1975 the Enclosed Flush Deck model turned the aft deck into a huge full-width and fully paneled salon. After 1972, a flybridge became a popular option. The interior is arranged with the owner's stateroom and guest cabin aft, a mid-level dining salon and galley, and a guest stateroom at the bow. The main salon is very spacious and includes a flybridge access ladder, wing doors forward, and a built-in wet bar. Most 55 Flush Deck yachts were powered with 425hp 8V71 diesels that will cruise at 14–15 knots (around 18 knots top). Due to a somewhat limited fuel capacity, the cruising range is less than 200 miles.

Specifications

Length.....	55'0"	Cockpit.....	NA
Beam.....	16'6"	Fuel.....	570 gals.
Draft.....	4'0"	Water.....	162 gals.
Weight.....	57,800#	Hull Type.....	Modified-V
Clearance.....	16'9"	Deadrise Aft.....	NA