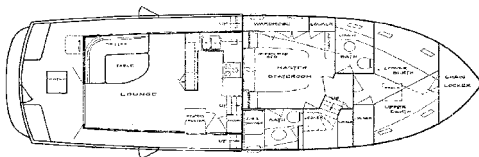
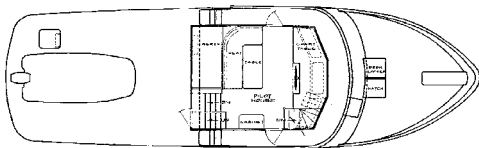


# DeFever 49 Pilothouse (Hard Chine)

1978-90



Arthur DeFever designed a series of popular pilothouse trawlers back in the late 1960s for Grand Banks. Called Alaskans, these sturdy wooden passagemakers soon attracted a following among serious offshore cruisers, and it was only a matter of time before similar designs became available in fiberglass. The original DeFever 49 Pilothouse first appeared in 1977, built by the Sen Koh yard in Taiwan on a hard-chined solid fiberglass hull with teak decks, window frames, doors, rails, etc.—not exactly a low-maintenance boat. A handsome design with a go-anywhere appearance and enough bulk to deal with heavy seas, the 49's traditional floorplan locates the master stateroom directly below the raised pilothouse with the guest stateroom forward. The interior is total teak, however in 1985 much of the high-maintenance exterior teak was eliminated. Powered with twin 135hp Lehman diesels, she's an economical boat to operate (about 3 gallons per hour at an 8-knot cruising speed) with genuine long-range cruising potential. A total of 64 are reported to have been built during her production run.

## Specifications

Length Overall.....	49'9"	Clearance.....	17'0"
Length WL.....	42'0"	Fuel.....	800 gals.
Beam.....	15'0"	Water.....	400 gals.
Draft.....	4'6"	Waste.....	70 gals.
Weight.....	50,000#	Hull Type.....	Semi-Disp.