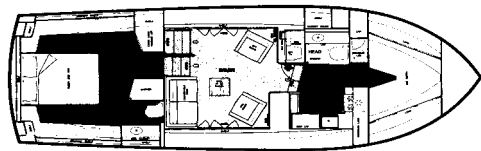
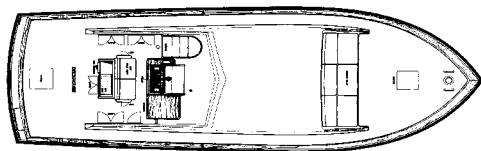


Egg Harbor 40 Motor Yacht

1982-86



The Egg Harbor 40 Motor Yacht was one of the last of the flush-deck motor yacht designs built by a major U.S. manufacturer. Ending production in 1986, she was built on the reworked hull of the earlier Pacemaker 40 MY whose molds and tooling Egg Harbor had acquired after Pacemaker closed down in 1980. A practical and straightforward cruising yacht, her spacious two-stateroom interior is centered around a salon that seems larger than its dimensions might suggest. An enormous U-shaped galley is down from the salon level, and only the aft head has a separate stall shower. Elsewhere, a built-in washer/dryer is fitted under the wet bar, and the grain-matched teak woodwork is all of furniture quality. The aft stateroom is large for a 40-foot yacht and includes a home-size closet with real wardrobe space. Topside, the covered aft deck is large enough for entertaining several guests, and wide side decks provide secure access to the bow. As it is (or was) in most flush-deck motor yachts, the flybridge is small compared with those of today's 40-foot yachts. Gas engines were standard (15-knots cruise/24 knots top). Optional 410hp 6-71TIs cruise at 20 knots.

Specifications

Length.....	40'0"	Fuel	300 gals.
Beam.....	14'1"	Water	100 gals.
Draft.....	2'11"	Headroom	6'4"
Weight.....	30,000#	Hull Type	Modified-V
Clearance	16'2"	Deadrise Aft	8°